



Anti-social Behaviour and Community Safety

Sarah Pickering –

Senior Community Safety Officer

01858 821349

Content



- How to report incidents in your parishes
- What is Anti-social Behaviour
- Who deals with what!
- Common myths
- How we can work better in partnership – Rural Watch, Churchwatch, Speed watch.

ASB Definition



The community safety partners in Leicestershire, Leicester and Rutland accept the following definition(s) of anti-social behaviour:

Acting in a manner that is causing or is likely to cause harassment, alarm or distress to one or more persons not of the same household as the perpetrator

Crime and Disorder Act 1998

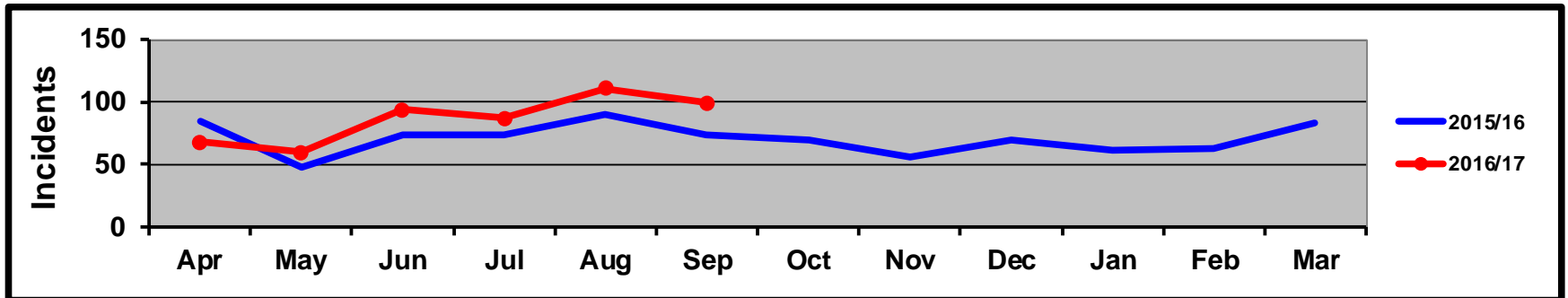
Who deals with what in Harborough ?



- **Police** – Drunk and rowdy behaviour, vandalism, threatening and abusive behaviour, drug related ASB (101 or 999)
- **Environmental Health** – Nuisance Noise – including barking dogs
- **Generic enforcement** - Litter, dog fouling and abandoned vehicles
- **Contracted Services** – Fly Tipping & graffiti
- **Housing Associations** – Own tenant related ASB of any type
- **Community Safety Team** – ASB of any other type- including hate incidents and neighbour disputes -working with other teams as appropriate.

ANTI-SOCIAL BEHAVIOUR INCIDENTS Q1 & Q2

Incidents YTD	
2015/16	2016/17
476	560



Multi-agency working to prevent ASB utilising an Incremental Process



1. Advice letter or verbal warning
2. Written Warning
3. Acceptable Behaviour Contracts
4. Non-legal Serious Interventions (SLF, Support Referrals, Mediation etc.)
5. Legal Interventions (Evictions, injunctions, CPN, CBOs etc.)

Alongside these there is also Statutory Nuisance legislation that can be used for some ASB such as noise.

Purpose of the Joint Action Group

- Multi-agency Membership – monthly meeting.
- Manage cases of high risk ASB, including hate incidents and local crime issues through a multi agency approach
- Deal with perpetrators of ASB through the Incremental Process
- Support victims of ASB and related crime, particularly vulnerable victims
- Focus on ASB hotspots





Common Myths

- Ball Games –

Ball games are not ASB unless they are deliberately and persistently played recklessly leading to property damage

- Parking –

This is not generally classed as ASB

Enforcement can only take place if there are restrictions in place such as yellow lines or if it is dangerous

How can we work better in Partnership



Rural Watch



*Working together with the rural
community*

www.leics.police.uk/ruralwatch



Leicestershire
Constabulary

Church Watch

Help us protect the heart
of your community!

Due to the rise in the price of metal; travelling criminals are targeting places of worship and stealing lead and copper. Your local church is at risk and we need your help to report any suspicious activity.

'Church Watch' has been launched across Rutland to enable us all to work together to prevent and deter criminals stealing from our local churches and to catch those responsible for carrying out these crimes.

We are asking everyone living near or within sight of a church, to be our eyes and ears and call the police with information. We'd also like lots of people to sign up to '**Neighbourhood Link**' - a community messaging service through which you can receive informative emails with help and advice.

What you can do:-

Firstly, knock on all the neighbouring houses and introduce yourself and explain the risk your church faces. If they are aware of the lead theft problem, they are more likely to notice and report suspicious vehicles.

Ensure everyone has your telephone number so that they can call you when they do see something suspicious. Some people prefer to check with you first before phoning the police and giving their name.

Advertise that you are on the lookout for lead thieves with posters at entrances and outdoor notice boards.

Never ever leave ladders out in the open or in unlocked sheds. Lead thieves will use ladders and other items to gain access to vulnerable areas. Choose good strong padlocks for sheds and other outhouses and make sure thieves can't look in.

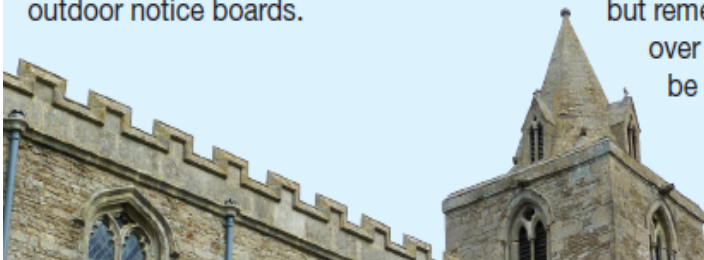
Start thinking about sensible crime prevention advice such as good security lighting, CCTV and cutting down bushes or shrubs that are covering sensors which turn on any outdoor security lighting.

Consider anti-climb paint for drainpipes but remember, you can only use it on piping over 2m high and warning notices must be used.

Consider forensic property marking liquid such as SMARTWATER or SelectaDNA. It can be put on all access points to lead flashing, lead roofing and lead windows. It's quick to apply and really deters lead thieves. Put signs up to tell people you are using it – it acts as a good deterrent.

Finally, if you see anyone acting suspiciously around the church, don't be afraid to call the police.

Join the community messaging service 'Neighbourhood Link' www.neighbourhoodlink.co.uk then we can send messages to you quickly warning you of incidents of note and giving advice.



Speeding



Harborough Community Safety Partnership have purchased a speed gun for the police which Parishes can request if they are experiencing issues in their villages – this is however subject to availability and to the area being safe for the police to stop traffic.

Please contact Sarah Pickering to request the speed gun - evidence of need should also be included such as number of complaints, any accidents etc.

Email: s.pickering@harborough.gov.uk

Community Speedwatch



Community Speed Watch is a scheme to help people reduce speeding traffic through their community. The scheme enables volunteers to work within their community to raise awareness of the dangers of speeding and to help control the problem locally.

Community Speed Watch [Be a Local Hero] is a partnership initiative operating **only** in Leicester, Leicestershire & Rutland using the combined efforts of the local residents and supported by the Leicester, Leicestershire and Rutland Road Safety Partnership.

Community Speed Watch incorporates poster campaigns and a pledge system linked to direct action using radar speed guns and Vehicle Activated Signs, all under the supervision of the County Council. The use of the radar devices will not lead to prosecution – drivers will get a letter from the police instead – but will help to underline the community's commitment to reducing speed.

<http://bealocalhero.com/>

For further details

Contact

- Leicestershire County Council
County Hall
Glenfield
Leicester
LE3 8RA
- T: 0116 3057233
- E: speedwatch@leics.gov.uk